

ProLine PL6303

Quality. Cooled. Cameras.

3072 x 2048 Imaging Array

9 μm Pixel Size

ProLine sets the standards in key performance areas that include: download speeds, cooling, low noise operation, anti-ghosting technology, image quality, and linearity. ProLine download speeds are fast while maintaining low noise frame quality. ProLine achieves outstanding cooling without water assist. simply set the ProLine cooling where you want it and the camera will do the rest -- quickly and without worries. ProLine frame quality is second to none thanks to careful design, implementation, and setup. All cameras are assembled in our clean room under exacting conditions and must pass a battery of tests before being shipped.



Features

Benefits

1 MHz and 8 MHz digitization

Fast Image capture with full 16-bit resolution

3072 x 2048 Array with 9 μm pixels

Resolves fine detail

Flexible binning and readout

Increases frame rate

Thermoelectric Cooling to 60°C Below Ambient

Excellent low-noise imaging

Excellent quantum efficiency

High sensitivity for fast image acquisition

F-mount and Canon EOS available

Wide variety of optical choices

Acquisition software included

Ease of integration with open source SDK

USB 2.0 interface

Industry standard connectivity; fast data transfer



Engineering Excellence

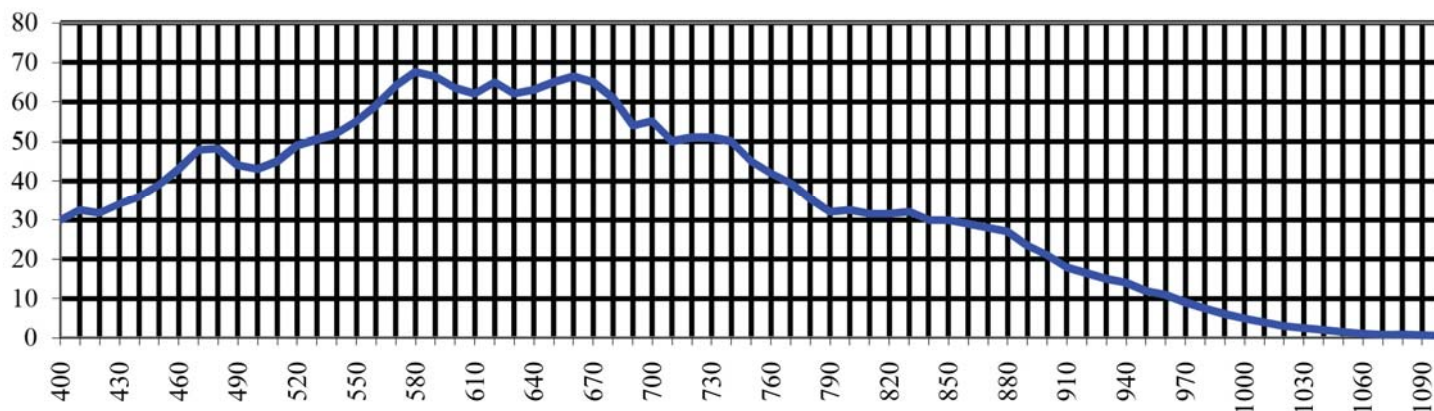
Because Your Image Depends On It.

1250 Rochester St.
Lima NY 14485 · USA
585 624 3760
sales@flicamera.com
www.flicamera.com

Sensor Specifications (from manufacturer)

Sensor	On Semi KAF-6303E	Sensor Size	27.6 X 18.4 mm	Megapixels	6.3
Pixels	3072 x 2048	Sensor Diagonal	33.1 mm	Video Size (inch)	2.1
Pixel Size	9 μ m	CCD Variants			
Full Well Capacity	100000 electrons	CCD Grades	Standard		
Color Options	Monochrome only	Anti-Blooming	NA		
CCD Type	Full frame				

Sensor Quantum Efficiency (Absolute)



Camera Performance

Typical Maximum Cooling	60°C below ambient	Dark Current (typical)	0.01 electrons/pixel/sec at -40°C
Temperature Stability	0.1°C	Cooling Method	Air (Optional liquid)
Digitization Speed	1 MHz and 8 MHz (software selectable)		
Typical System Noise	12e- @ 1 MHz; 16e- @ 8 MHz	Non-Linearity	<1%
Housing Dimensions	6.2 X 6.2 X 3.8 inches (15.7 X 15.7 X 9.6 cm)	Weight	5.6 lbs (2.5 kg)
Focal Plane to Face Plate	21 mm		
Lens Mounts	Optional Nikon F-mount or Canon EOS mount		
Interface	USB 2.0	Camera Channels	1
Available Shutters	65 mm	Shutter MTBF	1,000,000
External Triggering	Standard		
Environment	-30°C to 45°C 10% - 90% Relative Humidity		
Power	12V (100-240V AC to 12V DC power supply included). With TEC off: <1A. TEC at 100%: 4.6A. Shutter open: 4A pulse for 100msec. Shutter held open, add 0.22A.		



Engineering Excellence

Because Your Image Depends On It.

1250 Rochester St.
Lima NY 14485 · USA
585 624 3760
sales@flicamera.com
www.flicamera.com