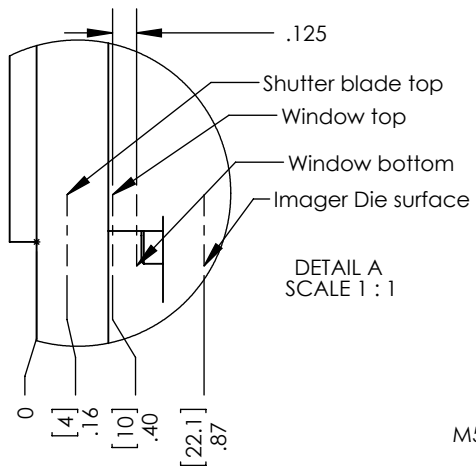
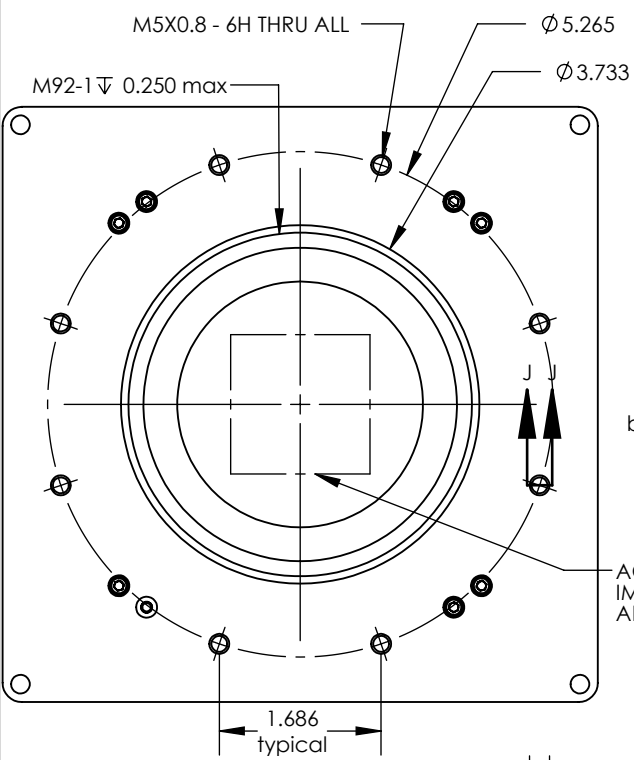


REV.	DESCRIPTION	DATE
A	RELEASE	3/25/17



M5X0.8 - 6H ∇ .350
2X On 3 sides

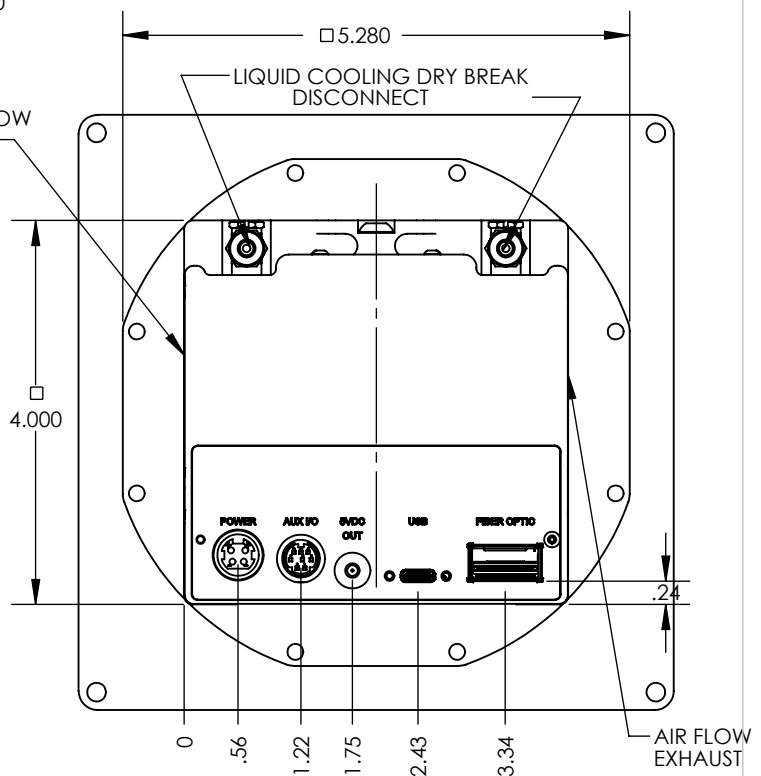
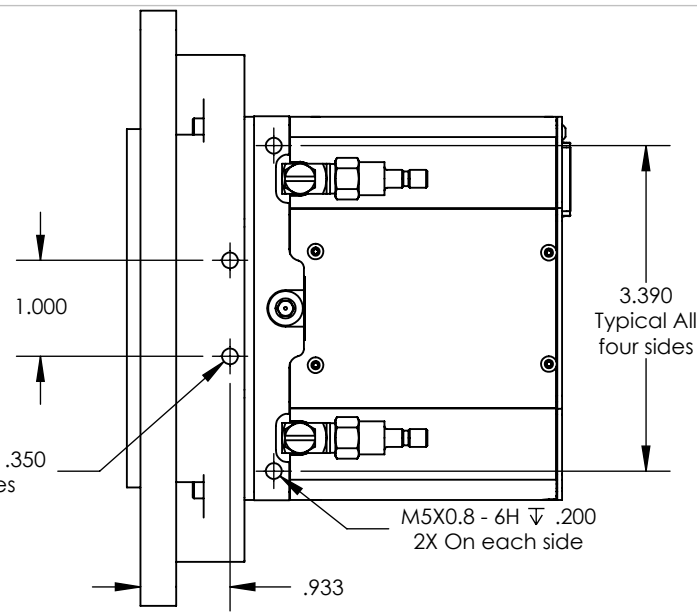
M5X0.8 - 6H ∇ .200
2X On each side



1.000
typical
both sides



.140
0
.373
.933 typical
both sides
1.083
1.389 Typical
All four sides



NOTES:
1. All dimensions are physical.
A. For optical distances:
1. Subtract 1mm for sealing window.
2. Subtract 0.3mm for sensor cover slip if present
2. Unless otherwise noted all dimensions are symmetrical about centerline.

K04040 36FVQNN		NAME	DATE	Unless otherwise specified dimensions are in inches TOLERANCES: ∠ : ±1° XXX ±.01 X.XXX ±.003 X.XXXX ±.0005	SIZE
PROPRIETARY AND CONFIDENTIAL: THE INFORMATION CONTAINED IN THIS DRAWING IS THE SOLE PROPERTY OF FINGER LAKES INSTRUMENTATION. ANY REPRODUCTION IN PART OR AS A WHOLE WITHOUT THE WRITTEN PERMISSION OF FINGER LAKES INSTRUMENTATION IS PROHIBITED.	DO NOT SCALE DRAWING	DRAWN ENG. QUALITY PROD.	REC 3/25/17		INTERPRET GEOMETRIC TOLERANCING PER: ASME Y14.5
				WT:	A
				SCALE: 1:2	
				SHEET 1 OF 1	