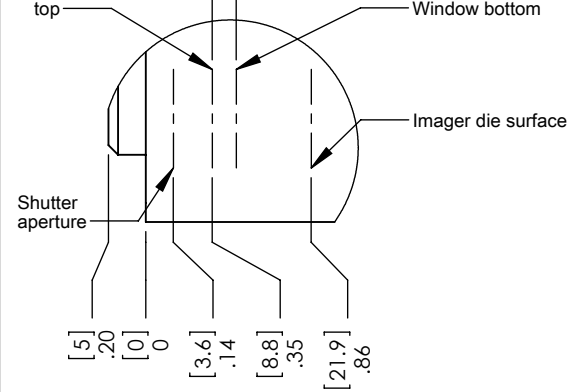
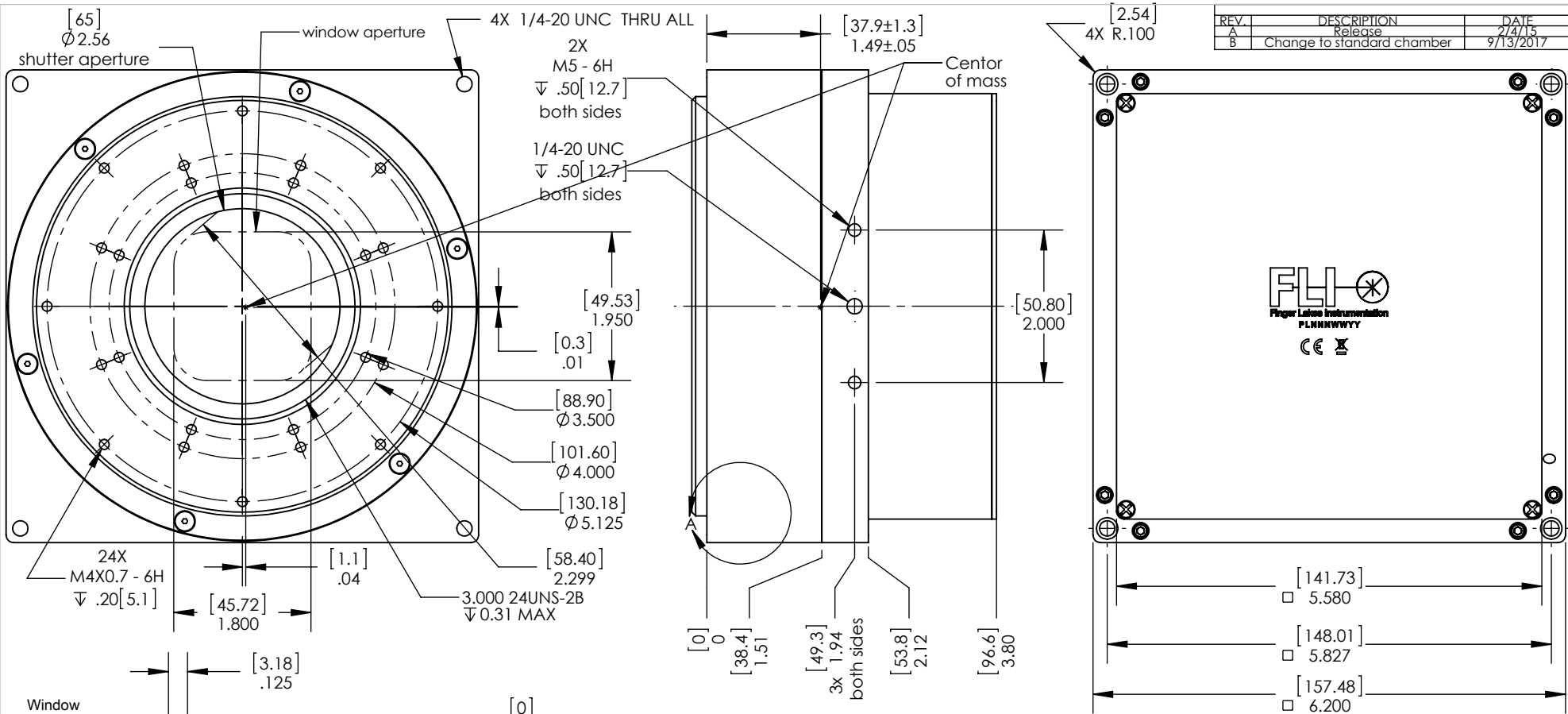
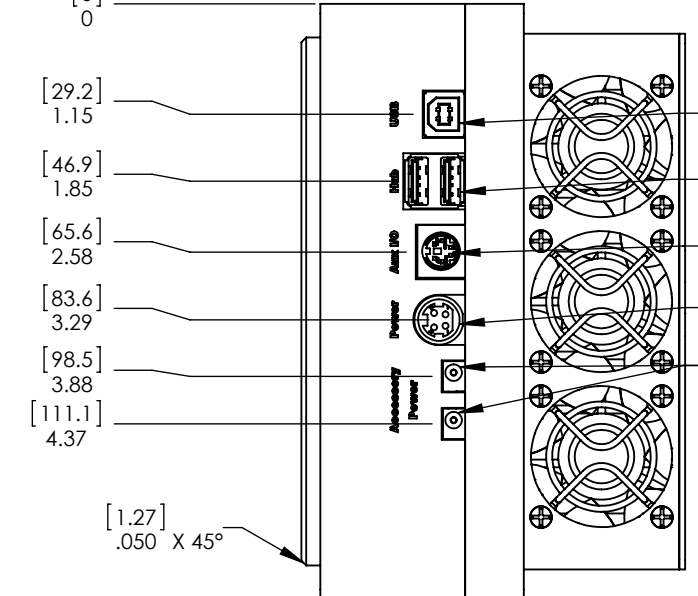


REV	DESCRIPTION	DATE
A	Release	2/4/15
B	Change to standard chamber	9/13/2017



NOTES:
 1. All dimensions are physical.
 A. For optical distances:
 1. Subtract 1mm for sealing window.
 2. Subtract 0.3mm for CCD cover slip if present
 2. Unless otherwise noted all dimensions are symmetrical about centerline



P6PA-COM		NAME	DATE	Unless otherwise specified dimensions are in inches TOLERANCES: ∠ : ±1° X.XX ±.01 X.XXX ±.003 X.XXXX ±.0005	SIZE
Proprietary and confidential: The information contained in this drawing is the sole property of Finger Lakes Instrumentation. Any reproduction in part or as a whole without the written permission of Finger Lakes Instrumentation is prohibited.	DRAWN	REC	2/4/15		WT: 5.74
	ENG.			REV	
	QUALITY			B	
	PROD.			SCALE: 1:2	
DO NOT SCALE DRAWING				TOLERANCING PER: ASME Y14.5	
				SHEET 1 OF 1	