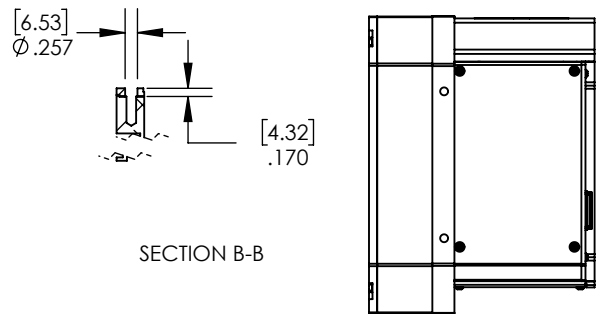
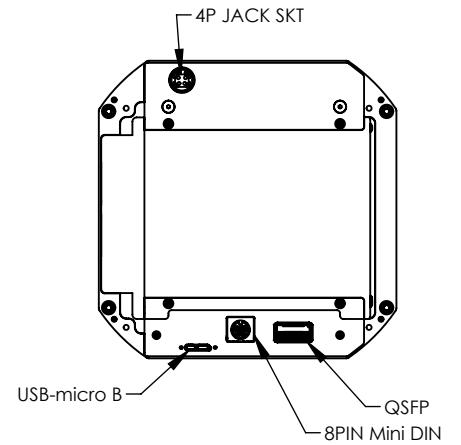
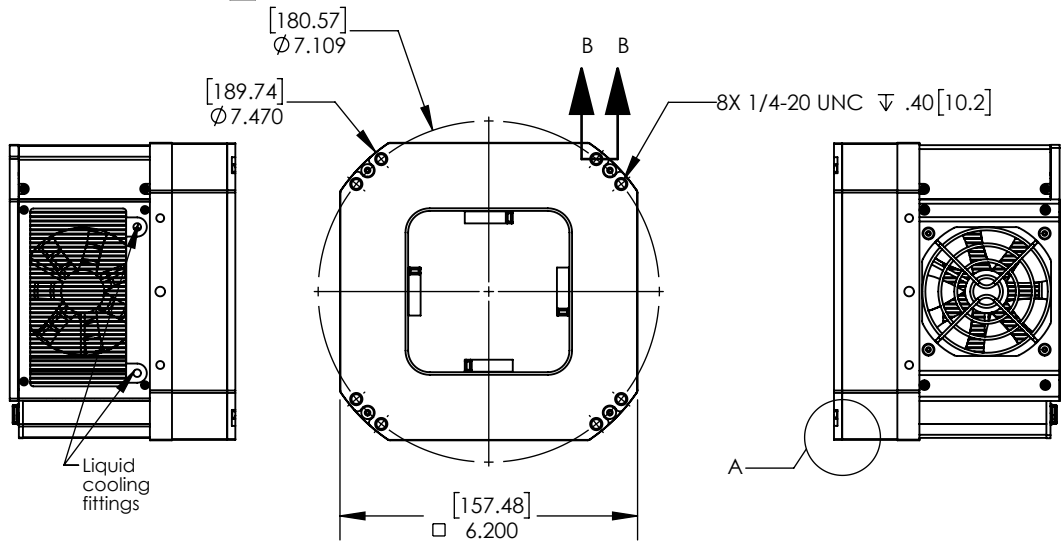
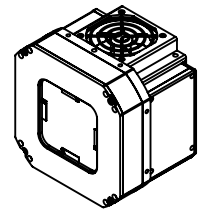
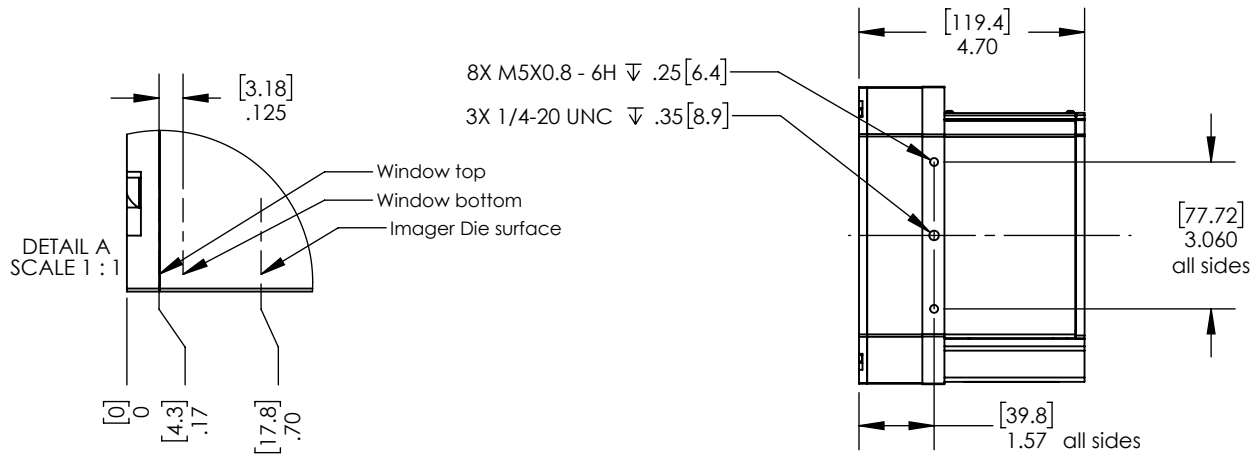


REV.	DESCRIPTION	DATE
A	Release	4/1/2019



- NOTES:
- All dimensions are physical.
 - For optical distances:
 - Subtract 1mm for sealing window.
 - Subtract 0.3mm for CCD cover slip if present
 - Unless otherwise noted all dimensions are symmetrical about centerline.

X06060-NNA



PROPRIETARY AND CONFIDENTIAL:
 THE INFORMATION CONTAINED IN THIS
 DRAWING IS THE SOLE PROPERTY OF
 FINGER LAKES INSTRUMENTATION.
 ANY REPRODUCTION IN PART OR AS
 A WHOLE WITHOUT THE WRITTEN
 PERMISSION OF
 FINGER LAKES INSTRUMENTATION
 IS PROHIBITED.

NAME	DATE	SIZE	A	MATERIAL:
DRAWN REC	05/07/18	WT: 11.10		
ENG.		REV	TOLERANCES: $\leq \pm 1^\circ$ X.XX ±.01 X.XXX ±.003 X.XXXX ±.0005	
QUALITY			INTERPRET GEOMETRIC TOLERANCING PER: ASME Y14.5	SHEET 1 OF 1
PROD.			DO NOT SCALE DRAWING	
		SCALE: 1:4		