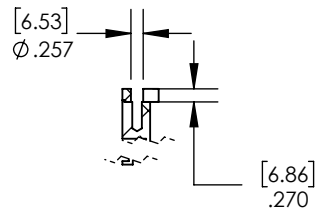
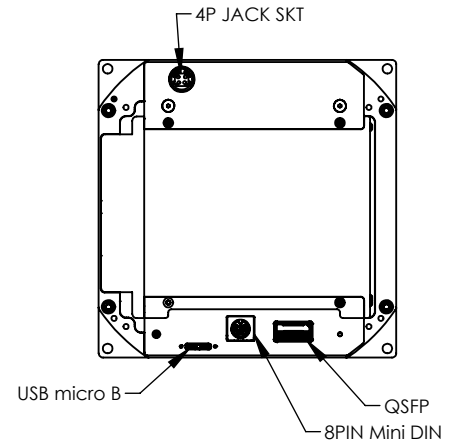
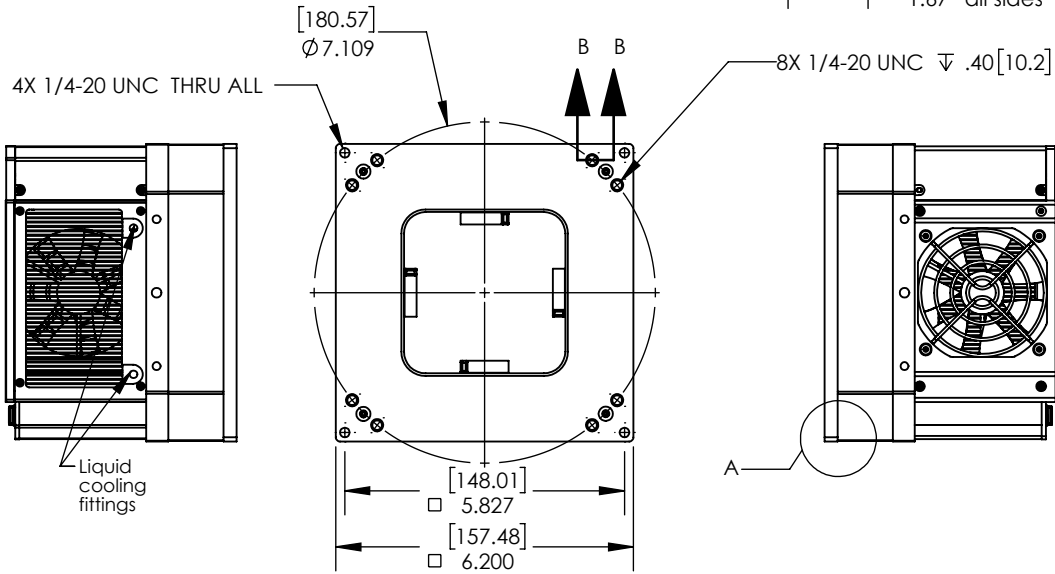
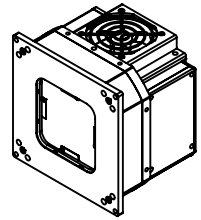
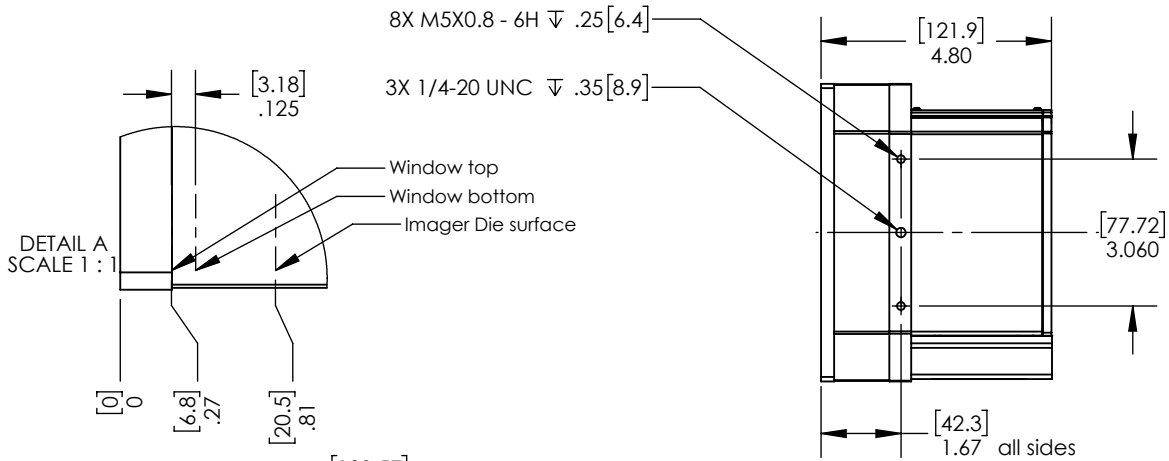


REV.	DESCRIPTION	DATE
A	Release	4/1/2019



SECTION B-B

NOTES:

- All dimensions are physical.
 - For optical distances:
 - Subtract 1mm for sealing window.
 - Subtract 0.3mm for CCD cover slip if present
- Unless otherwise noted all dimensions are symmetrical about centerline.

X06060-NFA



PROPRIETARY AND CONFIDENTIAL: THE INFORMATION CONTAINED IN THIS DRAWING IS THE SOLE PROPERTY OF FINGER LAKES INSTRUMENTATION. ANY REPRODUCTION IN PART OR AS A WHOLE WITHOUT THE WRITTEN PERMISSION OF FINGER LAKES INSTRUMENTATION IS PROHIBITED.

NAME	DATE	SIZE	A Unless otherwise specified dimensions are in inches TOLERANCES: $\leq : \pm 1^\circ$ X.XX $\pm .01</math> X.XXX \pm .003</math> X.XXXX \pm .0005</math> INTERPRET GEOMETRIC TOLERANCING PER: ASME Y14.5 $	MATERIAL:	
DRAWN	REC	05/07/18		WT: 11.31	FINISH:
ENG.				REV	
QUALITY					
PROD.					
DO NOT SCALE DRAWING		SCALE: 1:4		SHEET 1 OF 1	